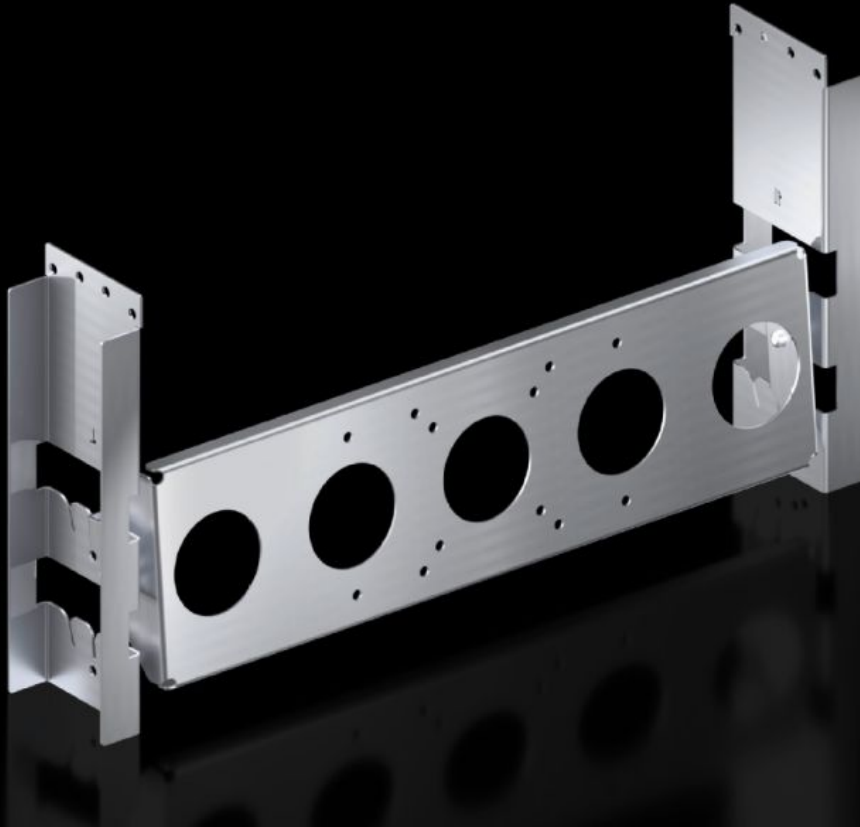


# Rittal – The System.

Faster – better – everywhere.



## SM 2383.060 Monitor mount

State: 8/16/2024 (Source: [rittal.com/us-en](http://rittal.com/us-en))

ENCLOSURES

POWER DISTRIBUTION

CLIMATE CONTROL

IT INFRASTRUCTURE

SOFTWARE & SERVICES

FRIEDHELM LOH GROUP



# SM 2383.060 - Monitor mount

Suitable for mounting monitors with VESA connection MIS-D, MIS-E up to 21". Variable depth mounting allows the operator to adjust the monitor ergonomically. In addition, there are three adjustment options (+10°/0°/-20°) to ergonomically adjust the monitor's tilt.

## Features

Model No.	SM 2383.060
Version	with VESA connection MIS-D, MIS-E
Material	Carbon steel, 2 mm
Surface finish	Zinc-plated
Supply includes	1 monitor bracket 2 angle brackets Assembly components
Note	Adaptor rail for VX compatibility is required for mounting via VX punched sections with mounting flange in VX SE, PC
Installation options	For direct installation in 600 mm-wide enclosures on the enclosure section For installation in 800 mm-wide enclosures only in conjunction with system chassis
Suitable for	Enclosure type: VX: = 600 mm Enclosure type: TS: = 800 mm Enclosure type: VX SE Enclosure type: PC Enclosure type: VX: = 23.6 " Enclosure type: TS: = 31.5 " Enclosure type: VX SE Enclosure type: PC
Packaging unit	1 pc(s).
Weight/packaging unit	2.58 kg 5.7 lb.
Customs tariff number	73269098
EAN	4028177966543

# Features

---

ETIM 8	EC002620
ETIM 7.0	EC002620
ECLASS 8.0	27189261

---